


Add New E-mail Account ✕

**Auto Account Setup** 

Your Name:   
Example: Barbara Sankovic


E-mail Address:   
Example: barbara@contoso.com

Password:

Retype Password:   
Type the password your Internet service provider has given you.

Manually configure server settings or additional server types:

Add New E-mail Account ✕

**Choose E-mail Service** 

Internet E-mail  
Connect to your POP, IMAP, or HTTP server to send and receive e-mail messages.

Microsoft Exchange  
Connect to Microsoft Exchange for access to your e-mail, calendar, contacts, faxes and voice mail.

Other  
Connect to a server type shown below.

Outlook Mobile Service (Text Messaging)

**Add New E-mail Account**

**Internet E-mail Settings**  
Each of these settings are required to get your e-mail account working.

**User Information**  
 Your Name:   
 E-mail Address:

**Server Information**  
 Account Type:   
 Incoming mail server:   
 Outgoing mail server (SMTP):

**Logon Information**  
 User Name:   
 Password:   
 Remember password  
 Require logon using Secure Password Authentication (SPA)

**Test Account Settings**  
 After filling out the information on this screen, we recommend you test your account by clicking the button below. (Requires network connection)

Then "More Settings"

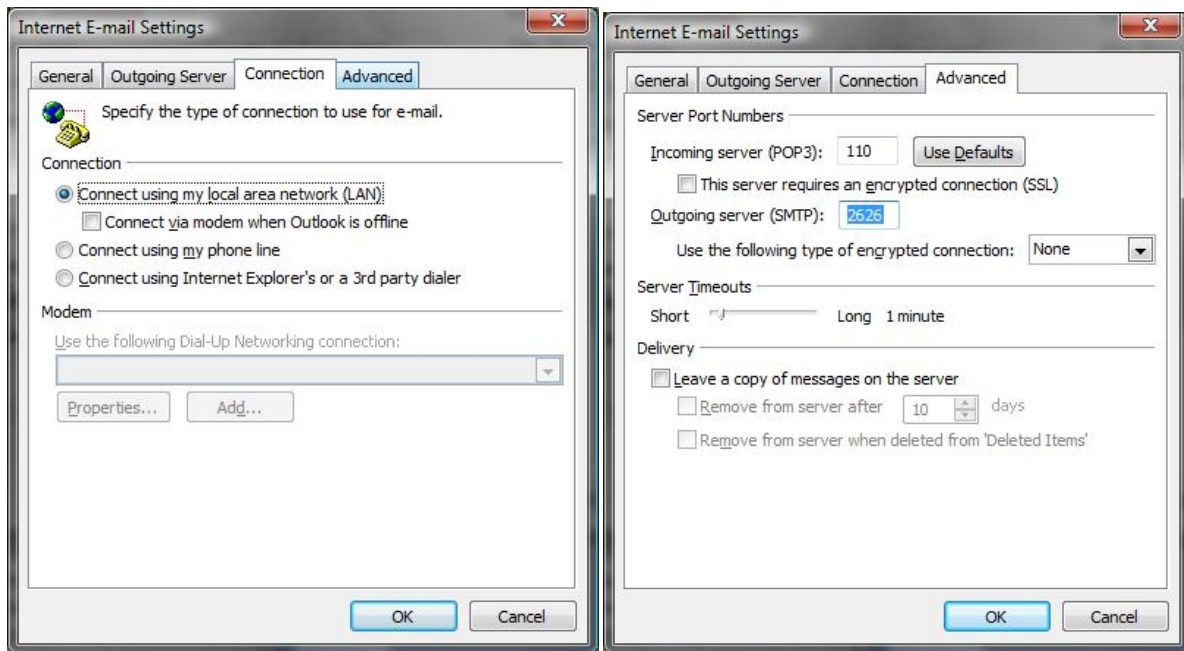
**Internet E-mail Settings**

General | Outgoing Server | Connection | Advanced

Mail Account  
 Type the name by which you want to refer to this account. For example: "Work" or "Microsoft Mail Server"

Other User Information  
 Organization:   
 Reply E-mail:

My outgoing server (SMTP) requires authentication:  
 Use same settings as my incoming mail server  
 Log on using  
 User Name:   
 Password:   
 Remember password  
 Require Secure Password Authentication (SPA)  
 Log on to incoming mail server before sending mail



Then OK – Test Account Settings – Next and Finish...